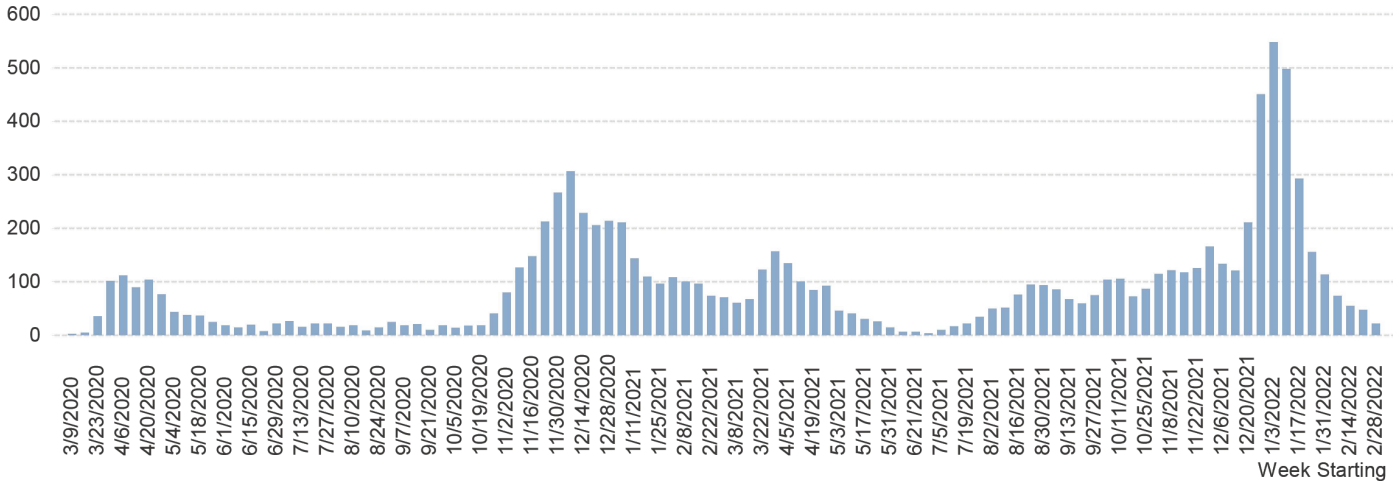


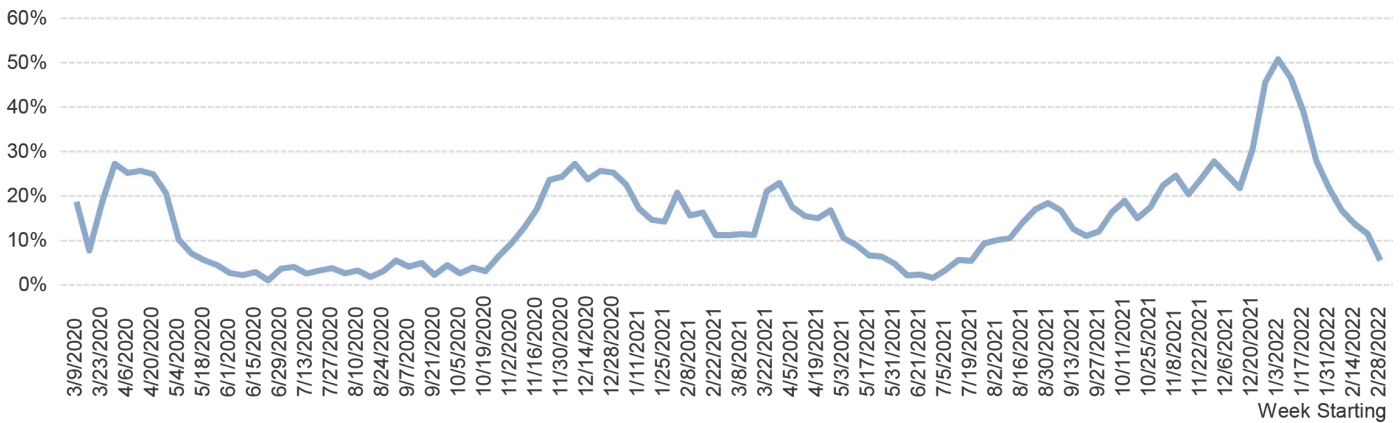
## CURRENT COVID-19 DATA

These metrics are presented to inform the community of the current status on COVID-19 in our community. Please continue to stay diligent utilizing proven infection measures such as masking, social distancing and vaccination.

**Total Patients Tested Positive for COVID-19 by Doylestown Health**



**Positivity Rate**



Date Range	Positive Tests	Peds Positive Tests (Age 16 and under)	Date Range	Avg Daily Covid Census	Avg Daily Covid Patients in ICU
2/28/22-3/6/22	28	0	2/28/22-3/6/22	3.9	0.6
2/21/22-2/27/22	54	8	2/21/22-2/27/22	3.9	0.4
2/14/22-2/20/22	65	7	2/14/22-2/20/22	8.0	0.6
2/7/22-2/13/22	84	16	2/7/22-2/13/22	9.6	0.4
1/31/22-2/6/22	124	29	1/31/22-2/6/22	14.3	0.9
1/24/22-1/30/22	183	36	1/24/22-1/30/22	24.9	2.7
1/17/22-1/23/22	325	72	1/17/22-1/23/22	32.7	4.6
1/10/22-1/16/22	539	67	1/10/22-1/16/22	42.0	4.4
1/3/22-1/9/22	599	55	1/3/22-1/9/22	44.9	3.0
12/27/21-1/2/22	487	34	12/27/21-1/2/22	23.9	3.3
12/20/21-12/26/21	220	27	12/20/21-12/26/21	16.3	2.1
12/13/21-12/19/21	128	29	12/13/21-12/19/21	21.7	5.1
12/6/21-12/12/21	141	21	12/6/21-12/12/21	24.9	4.7
11/29/21-12/5/21	170	29	11/29/21-12/5/21	15.7	2.6
11/22/21-11/28/21	132	40	11/22/21-11/28/21	15.1	2.9
11/15/21-11/21/21	126	38	11/15/21-11/21/21	14.3	1.4
11/8/21-11/14/21	126	28	11/8/21-11/14/21	16.6	3.6
11/1/21-11/7/21	116	27	11/1/21-11/7/21	14.4	3.7
10/25/21-10/31/21	92	15	10/25/21-10/31/21	8.1	0.6
10/18/21-10/24/21	78	26	10/18/21-10/24/21	11.6	1.4

Positivity Rate is the percentage of patients tested within the Doylestown Health system including both inpatient and outpatient facilities who are diagnosed with COVID-19.

Average Daily Census is the average number of patients in hospital and ICU for the given week.